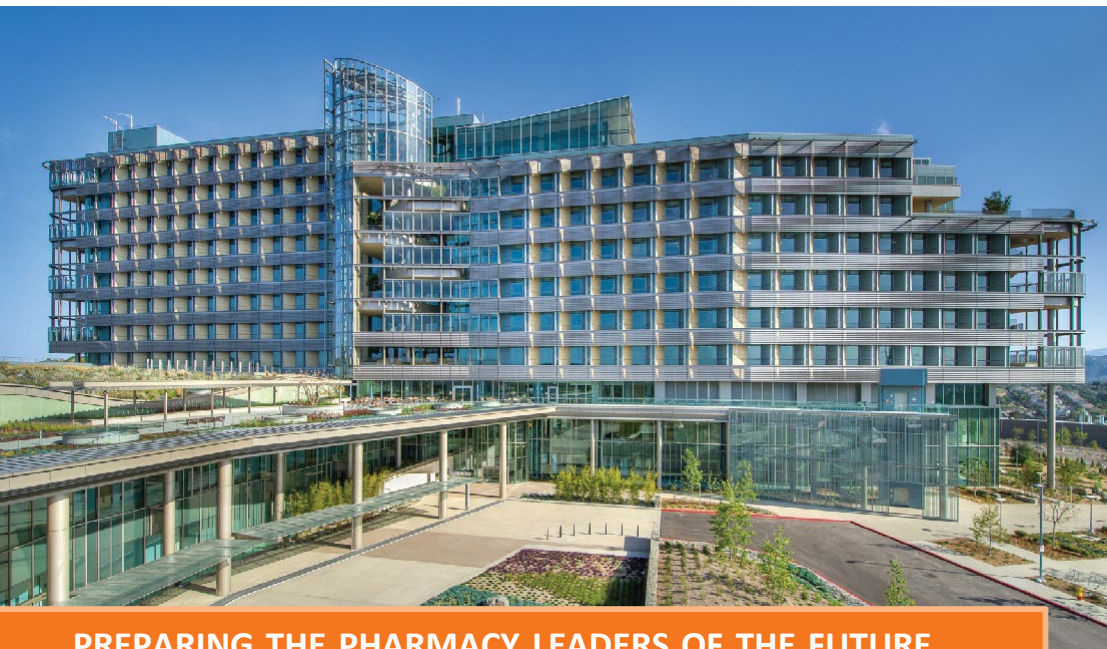


PHARMACY RESIDENCY PROGRAM



PREPARING THE PHARMACY LEADERS OF THE FUTURE

Train at a, \$956 million state-of-the-art facility in Escondido, California. Palomar Medical Center Escondido opened in August 2012 and serves as a symbol of Palomar Health's commitment to becoming the health care system of the future.

Palomar Health is a public, health care district in Inland North San Diego County with hospitals in Escondido and Poway, in addition to several other facilities in the region. With a service area of more than 800 square miles, Palomar Health is the largest public health care district by area in California.

As North County's most comprehensive health care delivery system, "Palomar Health is recognized for clinical excellence" in cardiac care, women's services, orthopedics, trauma, rehabilitation and behavioral health services. Facilities include Palomar Medical Center Escondido, Palomar Medical Center Poway, Ambulatory oncology infusion center, Villa Pomerado Skilled Nursing Facility, Palomar Center for Behavioral Health and Palomar Health Home Health Services. Additionally, Palomar Health is affiliated with Rady's Children's Hospital and Kaiser Permanente providing care for the local pediatric population and patients without immediate access to a Kaiser-owned facility.

Palomar Health's vision is to be the health system of choice for patients, physicians and employees, recognized nationally for the highest quality of clinical care and access to comprehensive services.

"The mission of Palomar Health is to heal, comfort and promote health in the communities we serve."

ABOUT PALOMAR MEDICAL CENTER

Cost: \$956 million

Type: Community

Size: 11 Stories, 740,000 sq. ft.

Beds: 288

- > 120 Acuity Adaptable Beds
- > 168 Med/Surg Beds
- > 11 Operating Rooms
- > 4 Cath. Labs/Interventional

Awards / Recognitions:

2021 One of the 250 Best Hospitals in America
– Healthgrades

2020 NCDR Chest Pain
MI Registry Platinum Performance Achievement Award
– American College of Cardiology

2022 Five-Star Recipient

Treatment of Sepsis, Pneumonia, Heart attack, Hip fracture
America's Best Hospitals for Stroke Care
– Women's Choice Awards

2022 World's Best Hospitals
– Newsweek

PALOMAR HEALTH PHARMACY SERVICES

Vision Statement:

To optimize therapeutic outcomes by providing compassionate care through medication management, education, and collaboration with our patients and professional colleagues.

Our Purpose:

The foundations of services provided by Palomar Health's Department of Pharmacy Services are:

- > Contribute to optimal therapeutic outcomes.
- > Provide information for appropriate application of pharmacotherapeutics.
- > Maintain an efficient and fail-safe drug distribution system.
- > Support health-care providers in the delivery of distinguished patient care.
- > Attract, develop and retain highly qualified pharmacists and technicians.

Pharmacy Services:

The Pharmacy Department provides comprehensive services on both campuses, Palomar Medical Center Escondido and Palomar Medical Center Poway.

The facilities have implemented an automated distribution model, consisting of inventory management and automated dispensing cabinets. Clinical services include pharmacokinetics, anti-coagulation management, total parenteral nutrition, renal dosing, and antibiotic utilization evaluation.

Additionally, a team of pharmacists on the units also provide discharge counseling.

Palomar Medical Center Escondido also has an outpatient pharmacy that provides specialty drugs and a meds to beds program. Palomar Medical Center Escondido is a teaching site for the University of California, San Diego, KGI School of Pharmacy, and primary site for the PGY1 pharmacy residency program and PGY2 program in Infectious Diseases.

Serving on a host of committees and rounding teams, pharmacists are vital members of the health care team within Palomar Health.

PALOMAR HEALTH

A California Public Healthcare District

PGY1 PHARMACY RESIDENCY AT PALOMAR MEDICAL CENTER

Status: Accredited

Application Deadline: January 9, 2023

Beginning Date: July 2, 2023

Number of Residents: 4

NMS Code: 121213 (General)

Stipend: ~\$53,580

Benefits: Medical, dental, vision,
10 paid vacation days and
5 paid holiday days.

Requirements:

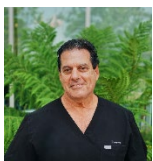
Accredited Pharmacy School Graduate, eligible for CA licensure, personal interview, submission of a letter of interest, curriculum vitae, application, pharmacy school transcript, three letters of recommendation and optional passport photo.

The Palomar Health PGY1 Acute Care Pharmacy Residency is based at Palomar Medical Center in Escondido, California. Residents completing this program will learn to provide evidence-based pharmacotherapy within interdisciplinary teams.

Major selling points of the residency are personal attention to foster learning, developing a clinical mindset and an emphasis on becoming pharmacy leaders. Opportunity exists to mature in one's practice, manage and improve the medication-use process and enhance drug information skills. Residents are required to complete a research project during the year.

More information is available at PalomarHealth.org/rxresidency.

For additional information please contact:



Hershel Schaftel, PharmD, BCCCP

**Clinical Pharmacy Specialist
Residency Director**

Email: Hershel.Schaftel@PalomarHealth.org

Phone: 442.281.2911

Address: Palomar Medical Center

2185 Citracado Parkway, Escondido, CA 92029

2021-2022 PGY-1 RESIDENTS



Adriana Muradyan, PharmD

School: Campbell University College of Pharmacy

Email: Adriana.Muradyan@PalomarHealth.org



Chibuikem Erundu, PharmD

School: Loma Linda University School of Pharmacy

Email: Chibuikem.Erundu@PalomarHealth.org



Kenson Lam, PharmD

School: Skaggs School of Pharmacy and Pharmaceutical Sciences (UCSD)

Email: Kenson.Lam@PalomarHealth.org



Helen Sedrak, PharmD

School: Loma Linda University School of Pharmacy

Email: Helen.Sedrak@PalomarHealth.org

The Community:

San Diego, California, praised as being the only city in the United States with a perfect climate, is both a vibrant modern city as well as a year-round resort.

With its 70 miles of immaculate beaches and world-famous San Diego Zoo and Safari Park, Sea World and LEGOLAND, San Diego is California's second largest city and the seventh largest city in the US. It is a city with population of nearly 1.4 million residents and more than 3.3 million residents countywide.

Within its borders of 4,200 sq. miles, San Diego County encompasses 18 incorporated cities and numerous other unique neighborhoods and communities, including downtown's historic Gaslamp Quarter, Little Italy, Coronado, La Jolla, Del Mar, Carlsbad, Escondido, Pacific Beach, La Mesa, Hillcrest, Barrio Logan, Chula Vista and more.

BLOCK ROTATIONS:

- > Orientation
- > Critical Care
- > Trauma
- > Emergency Medicine
- > Infectious Diseases
- > Medicine
- > Pharmacy Services
- > Total Parenteral Nutrition (TPN)
- > Sterile Products
- > Administration
- > Medication Safety

ELECTIVE ROTATIONS:

- > Academia
- > Ambulatory Care
- > Critical Care
- > Emergency Medicine
- > Infectious Disease
- > Ambulatory Oncology Infusion center
- > Additional rotations may be available upon request

LONGITUDINAL ROTATIONS:

- > Administration
- > MUE (Medication Use Evaluation)
- > Pharmacy Services (Staffing)
- > Residency Project
- > Teaching Certificate Program

PALOMAR HEALTH

A California Public Healthcare District